



Newsflash

Yesterday all servers in the U.S. went out on strike in a bid to get more RAM and better CPUs. A spokes person said that the need for better RAM was due to some fool increasing the front-side bus speed. In future, busses will be told to slow down in residential motherboards.

8th Step



Written by Mohd Khalid Kasmin

Monday, 27 August 2007

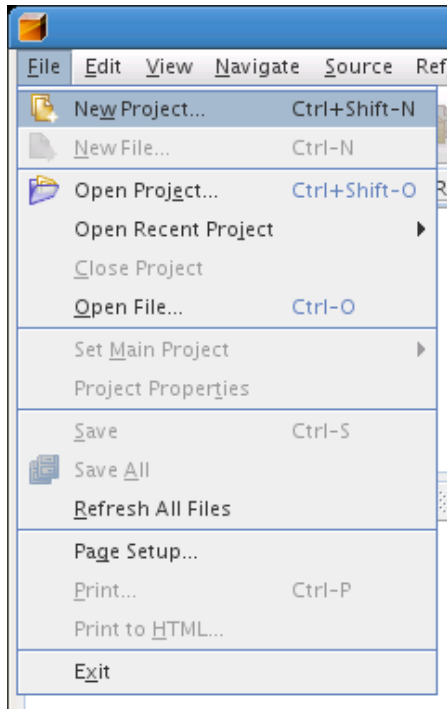
Programming using command line interface (CLI) has it's advantages but todays computer users are so used to graphical user interface (GUI) that we just can no longer be contented with writing application that do not use the GUI. Hence starting from this 8th step we are going to embark on learning how to make java application that utilises the the GUI.

It is possible to write a GUI application with the text based tools that we have been using for these past 7 steps but the job is so messy that most of you will definitely be turnoff by it. So to make life slightly easier, we'll use an integrated development environment (IDE) known as NetBeans specifically NetBeans 5.5.1.

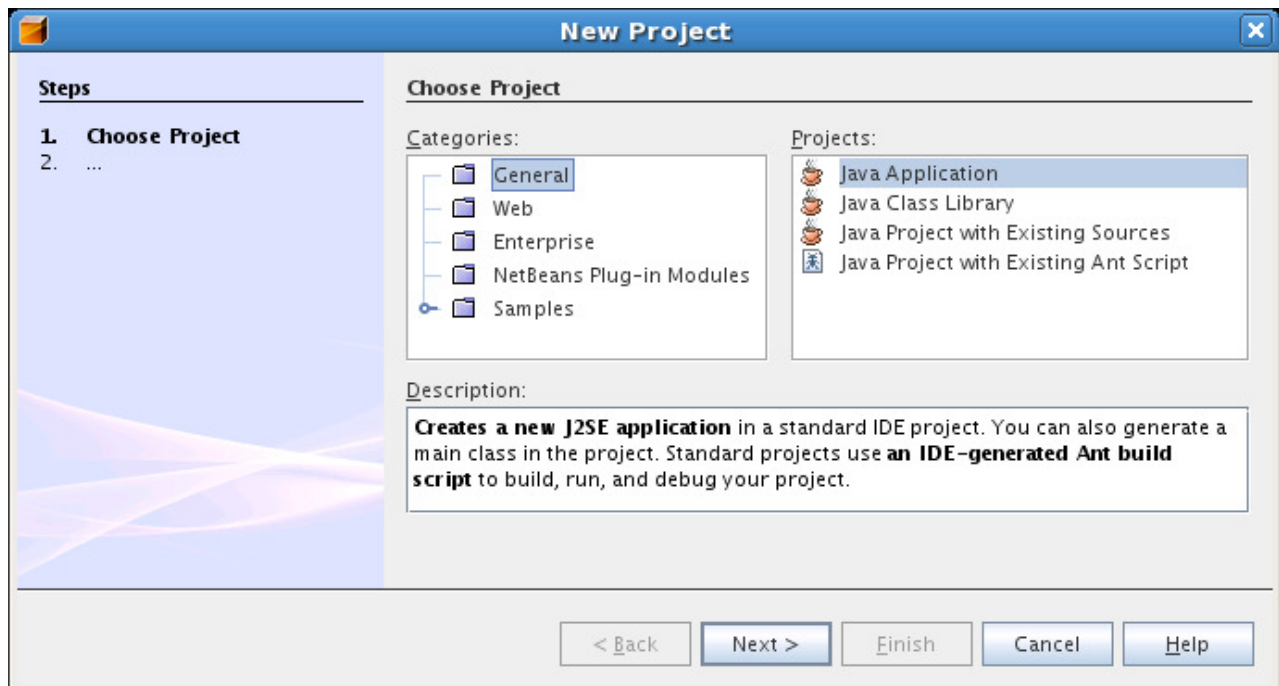
0. First, ssh to the our server. Next, once logged in, just type `nice -n15 netbeans &` on the terminal. If you had sshed with the -Y switch, after a few tens of seconds NetBeans should emerge on your display screen.

One important point to note: Since our server can readily handle up to 100 users (maybe even more) doing work in CLI mode, this machine will certainly be taxed to its maximum capability once we start using graphical based application. NetBeans 5.5.1 uses a geat deal of computer memory and with the 4Gbytes RAM server it can only accomodate up to 25 users concurrently using NetBeans if the users use the application wisely. What is meant by "wisely" here, is that, (a) when starting the NetBeans application please use it together with the "nice -n15" command, (b) in using the NetBeans please make sure you only have one project open at a time, and (c) please close your project everytime before quitting the NetBeans.

1.



2.



3.

New Java Application

Steps

1. Choose Project
2. **Name and Location**

Name and Location

Project Name:

Project Location:

Project Folder:

Set as Main Project

Create Main Class

4.

New Java Application

Steps

1. Choose Project
2. **Name and Location**

Name and Location

Project Name:

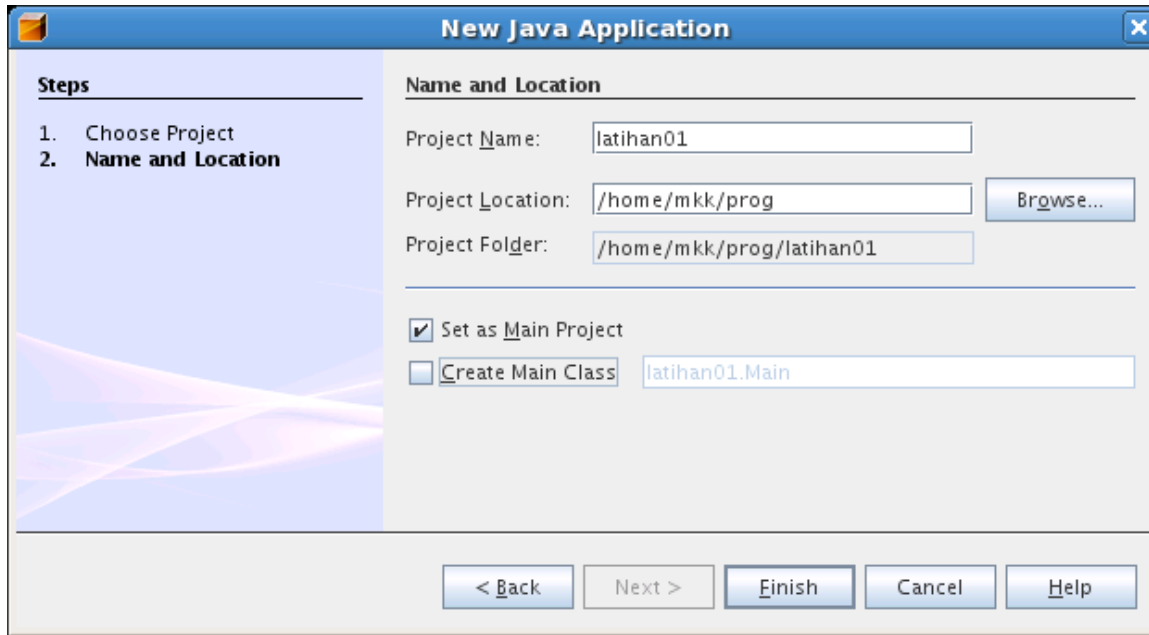
Project Location:

Project Folder:

Set as Main Project

Create Main Class

5.



Last Updated (Wednesday, 31 October 2007)

[< Prev](#) [Next >](#)

[\[Back \]](#)

[Home](#) | [Contact Us](#) | [News](#) | [Links](#) |

Copyright © 2008 Web Pages of Mohd Khalid. [Joomla!](#) is Free Software released under the GNU/GPL License.

WSC css

WSC XHTML 1.0