

VISUAL TECHNOLOGY PRODUCTION
(MPT1483)

INTRODUCTION TO DIGITAL IMAGING

Zaidatun Tasir

Department of Educational Multimedia
Faculty of Education
Universiti Teknologi Malaysia



DIGITAL GRAPHICS: RECALL & REVIEW



GRAPHIC QUALITY: an overview

- Many factors affect image quality.
 - Two factors that determine image quality are resolution and color depth.
 - **Resolution** is the number of pixels per inch.
 - **Color depth** refers to the number of distinct colors an image can contain.
-

GRAPHIC QUALITY: an overview

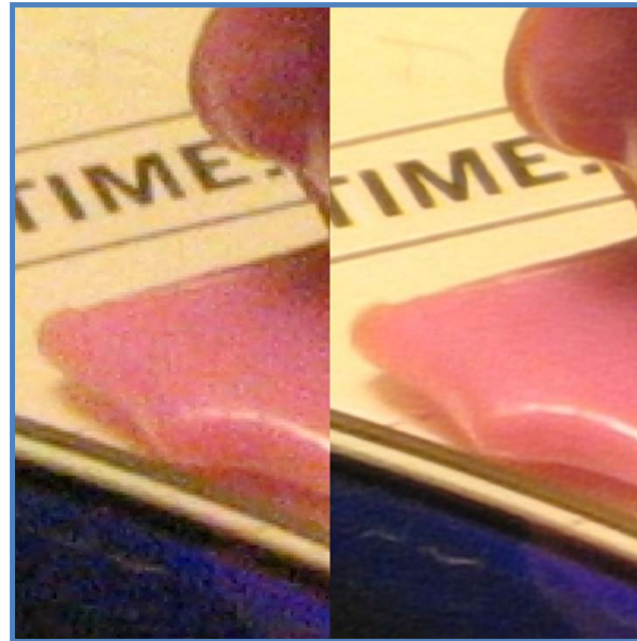
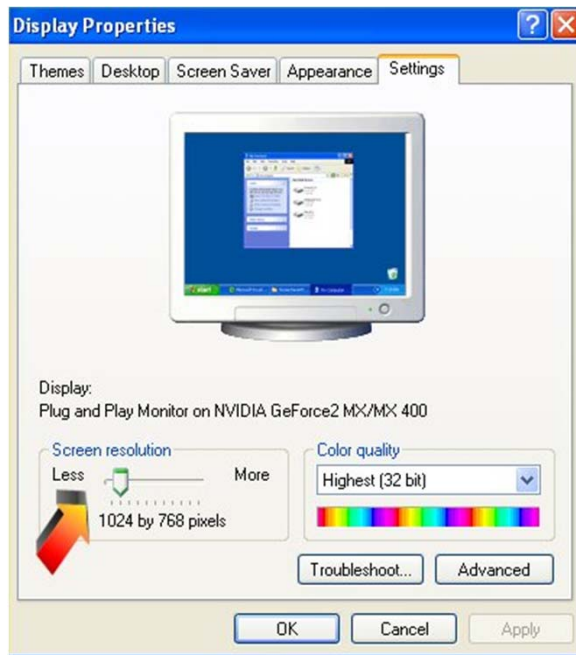
Image quality also dependent upon the **equipment** on which they are **produced** (scanner, camera) or **displayed** (monitor, graphics card)

GRAPHIC QUALITY: an overview

- Resolution is measured in...?
- Resolution vs Quality vs File Size ?
- The higher the resolution,?
- Printing vs Online Resolution...?

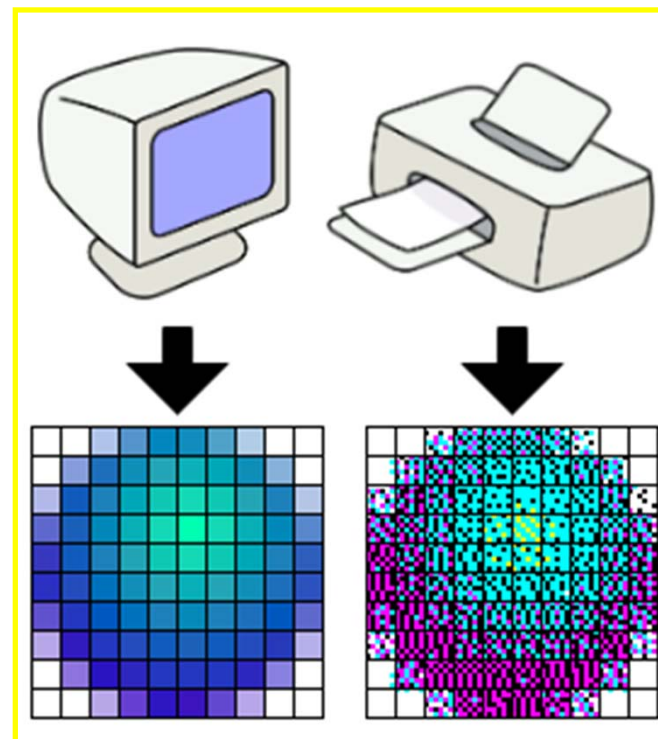
RESOLUTION

- affects the amount of discernible fine detail in an image.
- Computer images are made of dots.
- The more dots per inch (dpi), the higher the resolution.



RESOLUTION: DPI

- Used when printing - pixels are turned into dots per inch and counted by the spread over the paper.



DPI

Printer dots

GRAPHIC QUALITY: Resolution

- Printers range from 300 dpi to 2400 dpi (or more).
- On the computer screen, the dots are called pixels.
- Monitor resolution is usually around 72 – 96 dpi.

GRAPHIC QUALITY: Colour Depth

The color depth determined

“How much data in bits used to determined the number of colours in an image file”.

Colour depth is measured in **bits per pixel**

GRAPHIC QUALITY: Colour Depth

- The greater the color depth, the more colors may be stored.
- Examples....???

GRAPHIC QUALITY: File Size

The higher the image resolution the
_____ the file size.

The _____ color depth, the greater the
file size.

GRAPHIC FILE FORMATS

- A computer can save and interpret graphic images in a variety of formats.
- Some of the most common are:
 - GIF (Graphics Interchange Format)
 - JPEG (Joint Photographic Experts Group)
 - TIFF (Tagged Information File Format)
 - PIC (PICTure)
 - BMP (bitmap)
 - TGA (Targa)
 - PNG (Portable Network Graphics)

GRAPHIC FILE FORMATS

- What are differences for each file format and how to select which format to use?



GIF



JPEG



TIFF



EPS



PICT

GRAPHIC FILE FORMATS

Which file format should be used?

- Small images, like icons and buttons: ??
- Line art, grayscale (black and white), cartoons: ??
- 24-bit color-depth lossless Image: ??
- Scanned images and photographs: ??
- Large images or images with a lot of detail: ??
- Animated icons : ??
- High Quality printing: ??

Thank You !

